



## IN THIS ISSUE:

- Erosion Control
  - Roadside cuts p. 1
  - Bare soil Rx p. 2,3
- Finding Supplies p. 4
- Profiled Event p. 4
- Weed of the Month p.5
- Contact Us p.5



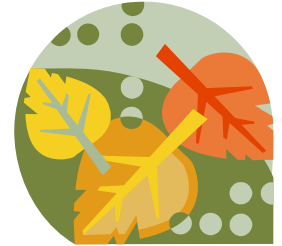
## MAINTENANCE

- Inspect culverts and ditches.
- Remove weeds and debris.
- Drain NID fed irrigation pipes and others that may freeze
- Herbicide control of blackberry



## PLANTING

- Seeding (grass and/or wildflower) for erosion control
- Bulbs for spring blooms






## Critical Area Seeding

Now is the time to address those erosion prone areas. Take a close look at your property and try these erosion control prescriptions.

### Roadsides that are scraped:

The areas alongside of the road can be planted with a short growing perennial grass that is a dryland plant (does not need watering once established). To ensure a good stand, if possible, sprinkle to germinate and establish. By establishing these grasses, minimal maintenance will be required. Low growth reduces fire hazard, and being a perennial, yearly weed eating should not be needed. Starthistle, foxtails and other annual weeds will have a difficult time establishing themselves with a perennial sod in place.

-  Plant one pound per thousand square feet of Covar Sheep's Fescue or Molate Red Fescue (CA native).
-  Mix one ounce per thousand square feet of Zorro Fescue with the Covar as a nurse crop. (See seed descriptions)
-  Remember, Covar and Molate are perennials and Zorro is an annual. Zorro will establish a quick cover but will allow Covar and Molate to establish. Zorro has about 980,000 seed /lb, consequently, we need a low amount for our purpose.

## EVENTS

[Identification & Designing with Cool Season Grasses Class - Nov 5th](#)

[Rural Property Class: "What to know before you buy" - Rocklin Campus](#)

[2005 CA Small Farm Conf. - Nov 13th – 15th Ventura, CA](#)




“Regular watering will guarantee the highest level of success for our new plantings.”

## All other bare soil disturbed areas :

Ideally, this planting should be done before the first fall rain. If we can successfully seed by Oct. 1<sup>st</sup>, then sufficient irrigation water should be available to germinate and establish. Regular watering will guarantee the highest level of success for our new plantings. **Sprinkle lightly**, daily, to germinate and establish stand. As plants grow and roots extend deeper into the soil profile, **irrigate** less often but longer per irrigation period. With the mild fall we are having right now, we can still get the seed down and should have good success in getting the seedlings established before the colder weather sets in.

For **beautification** add a pound or two of a wildflower mix.



Some great wildflower offerings to consider:

-  **Larner Seed Company's** "[Hills of California Mix](#)" (3-4 full months of color!)
-  **Peaceful Valley Farm's** "[California Native Wildflower Mix](#)" or "[Central Valley Mix](#)"
-  **Theodore Payne Foundation's** [Seed Mixtures](#), such as the "[Roadside Mix](#)," "[Centennial Mix](#)," and many more. (An excellent source for CA native wildflowers)

Be sure to check any seed mix for livestock compatibility prior to broadcast seeding.  
When in doubt, always error on the side of caution !!!

For all disturbed areas that we would like to reseed with plants that look natural with the surrounding undisturbed areas:

### Broadcast:

-  *Premium option:* Native grass mix; including, California Brome, Blue Wildrye, and California Barley at 1/2lb per1000 sq ft.
-  *Budget option:* Adapted blend mix of introduced species; including, Blando Brome, Subclover, and Rose Clover.



## Wildflower/Grass Seeding Continued ...

**Fertilize** with two pounds of triple sixteen (16-16-16) per thousand square feet.

**Use Straw mulch** in a ratio of one bale per thousand square feet. Be sure it is straw and **not hay**. The straw needs to be spread evenly with about 10 - 20% of the soil still seen below. This allows the new seedlings to come through and have enough sunlight for establishment.

After plants reach 4 inches tall, **fertilize again** with 5 lbs per thousand square feet of triple sixteen (16-16-16) again, or an equivalent organic fertilizer.

Buy an extra amount of seed for **touching up areas** for the next year or two. This way, these areas will look the same as the original seeding.



“Starthistle, foxtails and other annual weeds will have a difficult time establishing themselves with a perennial sod in place.”



### More Events

- [Living in the Forest - Manzanita Management & Inviting Birds to your Yard – Jackson, CA](#)
- [2005 American Agri-Women Annual Convention - Nov 10th thru 13th](#)



## Finding the Supplies for the Job

A couple of local sources are available for the above mentioned seed: [Peaceful Valley Farms](#) and Nevada County Farm Supply, both located off of Idaho-Maryland Rd in Grass Valley. You will want to call them and get on their mailing list. Both companies can take orders and give support over the phone. For a small fee, they also will take your soil sample, have it tested for nutrients, and provide you with a great report, plus how to add what is needed for your situation.

Nevada County Farm Supply also has a straw blower, hydromulcher, and crews to do the erosion control seeding if desired.

.....  
 "Buy an extra amount of seed for touching up areas for the next year or two."  
 .....

## Profiled Event for November

Don't forget that the [Nevada County Master Gardner's](#) are having "Designing with Native Grasses" workshop Saturday November 5<sup>th</sup> 10am to noon. Located at 1036 W. Main St. Grass Valley, Nevada Irrigation District grounds Demonstration Garden. Please call (530) 273-4563 for more information.



## HAVE YOU VISITED KCRABTREE.COM'S NEW FORUM?

What is a forum? It is an interactive bulletin board where you can post questions, share success stories, commiserate about your star thistle patch, vote on the latest poll, share photos, and much more. Learn from those who have tried and true knowledge. . . your fellow rural property owners! Or share your expertise with a greenhorn landowner.

What are you waiting for... [log-in and see what it is all about!](#)



## Contact Us

Phone:  
530.269.1217

E-Mail:  
[keith@kcrabtree.com](mailto:keith@kcrabtree.com)  
[paul@kcrabtree.com](mailto:paul@kcrabtree.com)



*Helping you manage  
your Green Acres*



## Weed of the Month – Scotch Broom

**Latin Name:** Cytisus scoparius

**Description:** Perennial shrub, 4-10ft tall, non-native, invasive..

**Where would I find it?** Found from Los Angeles to the Oregon border and is very prevalent in El Dorado, Nevada and Placer Counties. Is common in disturbed places such as Riverbank, road cuts and forest clear cuts but can colonize undisturbed grass land shrub land and open canopy forest under 4000 feet. Scotch broom prefers soils with a pH less than 6.5 and is rare on limestone based soils.

**Where did it come from and how does it spread?** Native to Europe and North Africa. Originally introduced to California in the 1850's. Spreads by extraordinary seed production; one medium sized shrub can produce 12,000 seeds a year. After ballistic dispersal, seeds are further dispersed by ants, animals or in mud clinging to road grading or maintenance machinery. Scotch broom is also readily dispersed. Plants can resprout from the root crown after cutting, or freezing and sometimes even after a fire.

**What problems does it cause?** Crowds out and out competes native species, is toxic to hooved mammals, burns readily and carries fire quickly into the tree canopy.

**How can I get rid of it?** Because of its copious seed production and seeds that stay viable for at least 5 years, this is a tough plant to control once established. Manual pulling of broom plants is effective, although a portion of the upper root mass must be removed as well. Any physical means of broom removal will require future monitoring to remove the resulting seedlings that will sprout from the residual seed band. Saw cutting the above ground portion of the plant at the end of the summer drought period (Aug. – Oct.) resulted in a resprouting rate of less than 7%, whereas cutting at other times resulted in resprouting rates of 40 – 100%. Heavy grazing by goats for 4 to 5 years has been reported effective. The disadvantage of using goats is that they are nonselective browsers, who will eat the native species attempting to revegetate the area. Foliar spraying with Gylphosate (Round-up), Triclopyr, and others can be effective although the remaining dead biomass must then be removed for fire safety.

**[Have you seen this California's Most Wanted weed on your property?](#)**